

LSL ADVISORS
COMMERCIAL REAL ESTATE



MIDTOWN EFFICIENCY

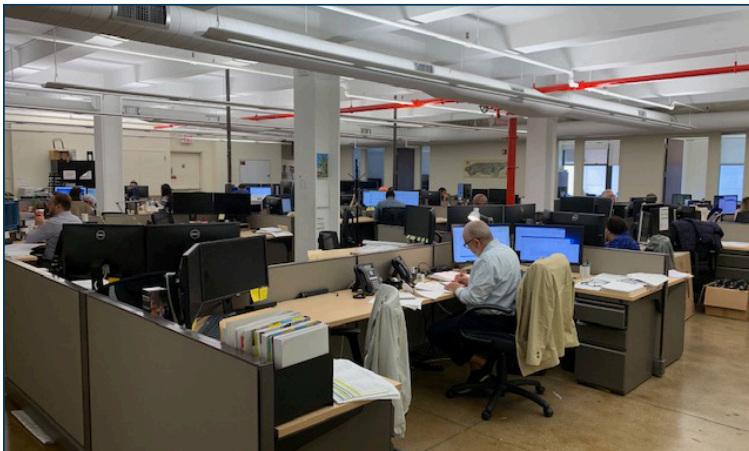
253 WEST 35TH STREET
New York, NY 10001

Lease Details

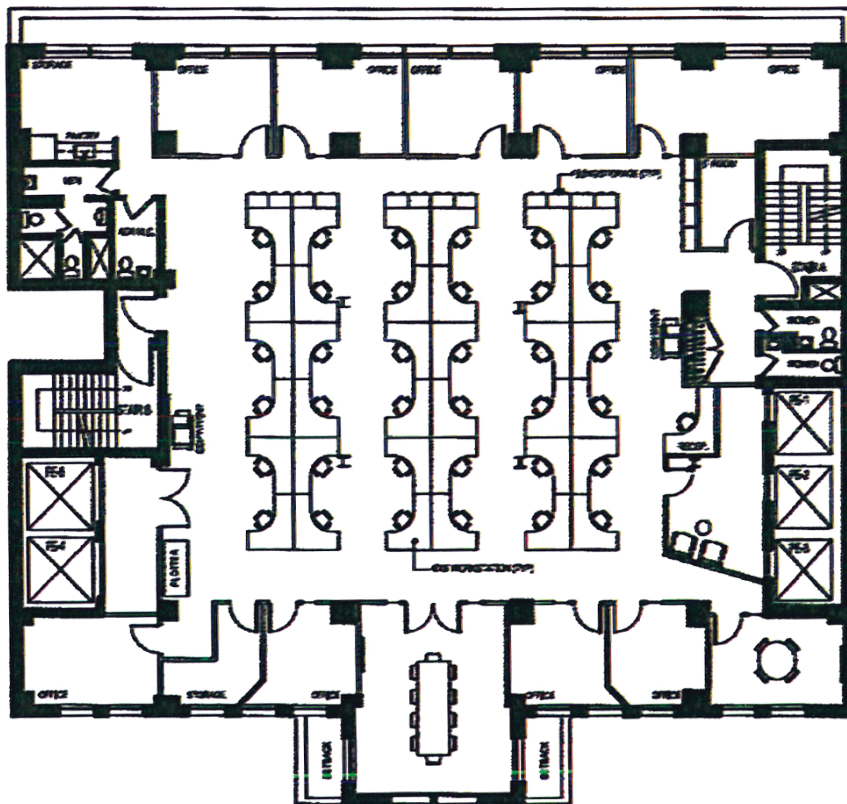
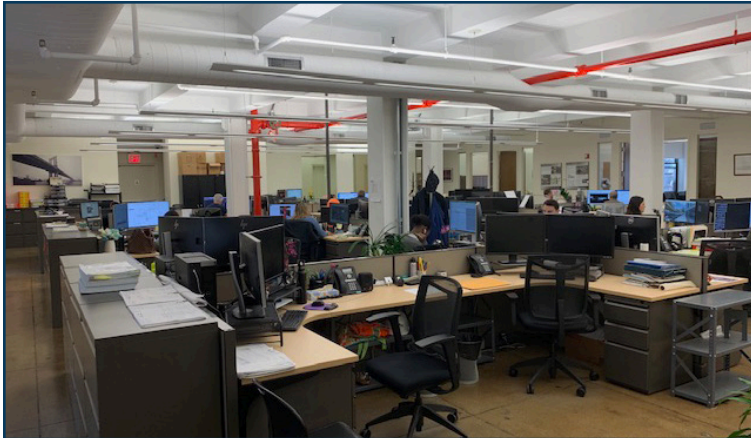
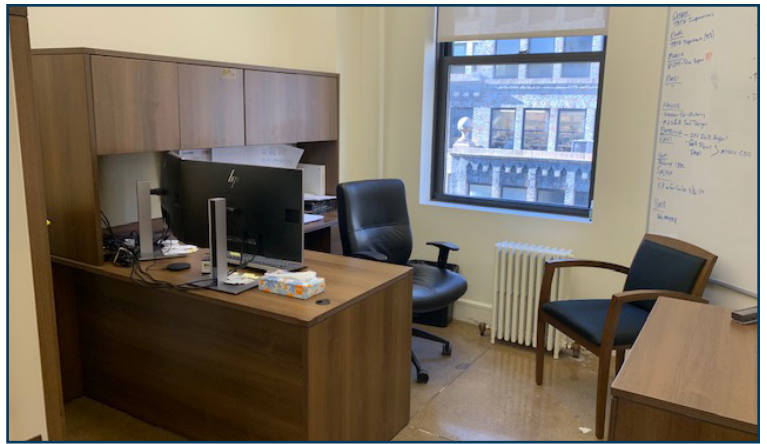
- Floor: Full 12th Floor
- Size: 8,000 SF
- Rent: Upon Request
- Sublease Through February 2024

Space Highlights

- Furnished
- 10 windowed offices
- 1 conference room
- Open area for 40 people



No representation is made to the accuracy of the information furnished herein and same is submitted subject to errors, omission, change of prices, rental, or other conditions, prior sale, lease, and/or withdrawal without notice. The furnishing of this information shall not be deemed a hiring. A commission in accordance with our principal's schedule of rates and conditions will be paid to the procuring Broker executing owner's brokerage agreement who fully consummates a lease upon terms and conditions acceptable to our principal.



Wayne Siegel

O: 212.564.0245
C: 732.740.2972

WSiegel@LSLAdvisors.com

Eric Siegel

O: 646.838.0171
C: 732.615.8506

ESiegel@LSLAdvisors.com

No representation is made to the accuracy of the information furnished herein and same is submitted subject to errors, omission, change of prices, rental, or other conditions, prior sale, lease, and/or withdrawal without notice. The furnishing of this information shall not be deemed a hiring. A commission in accordance with our principal's schedule of rates and conditions will be paid to the procuring Broker executing owner's brokerage agreement who fully consummates a lease upon terms and conditions acceptable to our principal.